

TUESDAY TECH TIP



NIAGARA FALLS PUBLIC LIBRARY/NIOGA LIBRARY SYSTEM

OCTOBER 10, 2017: NATIONAL GEOGRAPHIC MAPS

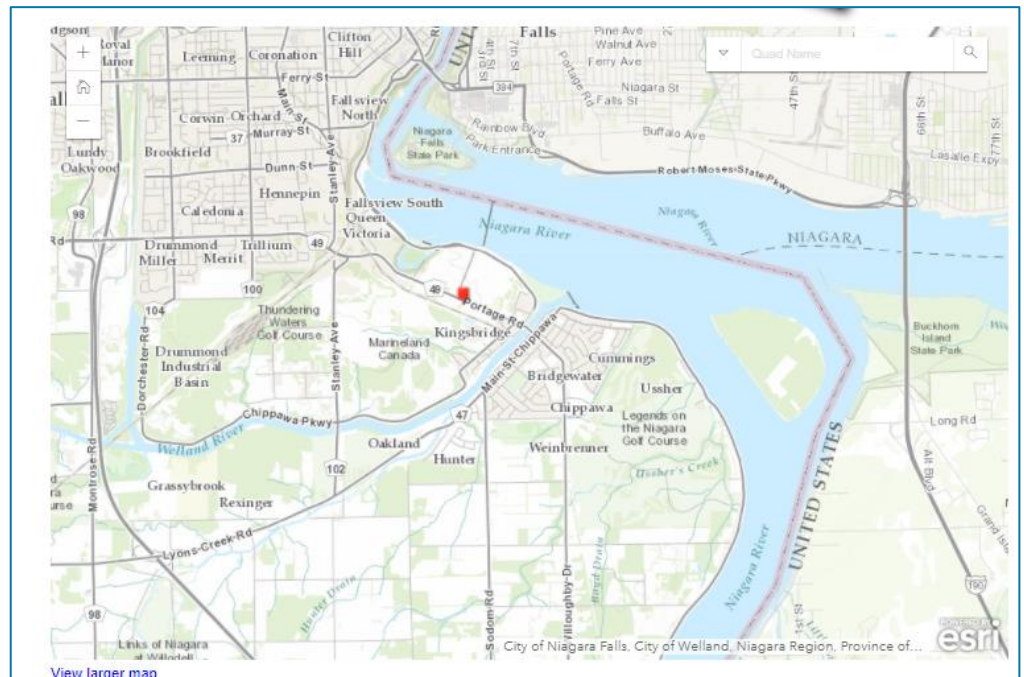
Outdoor enthusiasts and geography buffs are familiar with USGS topographic maps. These maps include contour lines that guide the user in understanding the topography and elevation of a landscape. USGS.gov makes their maps available on their website (<https://www.usgs.gov/products/maps/topo-maps>), but users have often had faced difficulties printing these from their home, office or library workstations.



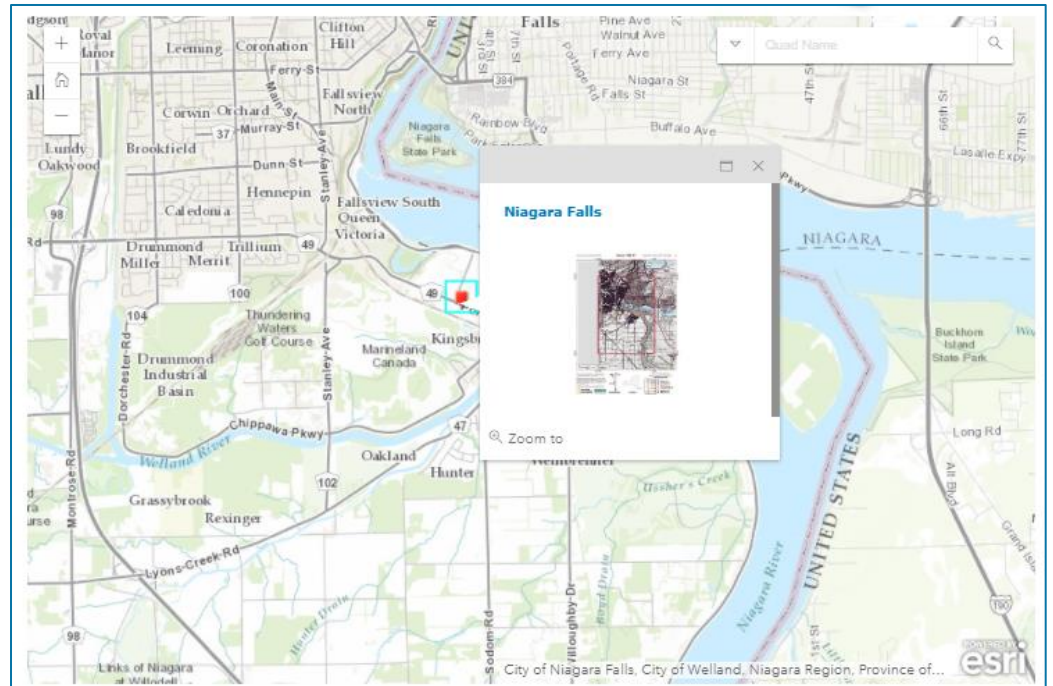
National Geographic recently launched a website (<http://www.natgeomaps.com/trail-maps/pdf-quads>) with the purpose of making the USGS topographic maps more user-friendly. Each topographic map is designated as a USGS 7.5 minute quad ("Quad"). Users can type an area name into the search box to find a Quad, or use the interactive map to zoom in to a specific area. Users can then download and print the map for future use.

In this example, the user zoomed into the Niagara region in an effort to find a Quad for the city of Niagara Falls.

As the user zoomed closer to the desired area, a red box appeared near Portage Rd., indicating a Quad is available for the area. The user then clicked the red box, and the Niagara Falls Quad topographic map appeared.



The Niagara Falls Quad can be downloaded, saved and printed.



The link to the PDF for this specific Quad is:
<http://pdf.quad.download.s3.amazonaws.com/43079a1.pdf>.

1425 Main Street
Niagara Falls, NY 14305
(716) 286-4894
<http://niagarafallspublib.org/>